

Privacy Area Inspection

Fitness Centers, Restrooms, Showers, Toilets

Protecting Your Business from Covert Cameras



EXEC  **SECURITY**
TSCM TECHNICAL SERVICES

Spy cameras create a serious privacy issue.

Employee finds hidden camera in women's restroom at DeSoto County business; police investigating

By: Tony Atkins

Updated: Jan 3, 2019 - 11:07 PM

WATCH: Employee finds hidden camera in

Voyeur steals from sports club and loses bid for suppression

Jono Galuszka · 14:28, Aug 20 2019



Class Case Arising From Rabbi's Voyeuristic Act Takes Giant Leap Forward

DC Superior Court Sets Deadlines For Discovery, Filing Of Consolidated Class Complaint And Class Certification Motion

Sanford Heisler Appointed Interim Class Counsel

Problems can include:

- Embarrassment
- Law suits
- Blackmail/extortion
- Loss of trust from customers/employees
- PR nightmare
- More...

\$2M Award In Video Voyeur Case



Two women who were secretly videotaped under their desks by an office voyeur won \$1 million each in a lawsuit against their former employer.

A Circuit Court jury agreed Tuesday that Patti Kidder and Katherine Dean had suffered mental anguish and emotional trauma when Ocwen Financial Corp. managers and co-workers teased them about the videotapes.

Hidden cameras are readily available everywhere.



They have been around for a long time.

C. P. STIRN'S
(PATENTED)
Concealed Vest Camera.



Newest PHOTOGRAPHIC INVENTION, takes six SHARP INSTANTANEOUS PICTURES without a change of Plate. This Camera is carried under the coat or vest, invisible to the eye. Stationary or moving pictures taken unknown to the object. Lens always in focus. Fine Nickel Plated Camera, in Handsome Box, with 6 Plates, for 36 Pictures, for No. 1, or 24 larger Pictures for Camera No. 2.

Camera, 6 inches in diameter,
 $\frac{3}{4}$ inches thick, $\frac{1}{2}$ lb. weight.

Nickel or Oxydized Camera, No. 1, Each, \$10 00
Magic Lantern Size Camera, No. 2, " 15 00

Every Camera guaranteed perfect. No Tourist, Artist or Student, amateur or professional should be without this Camera.

C. P. STIRN'S LATEST CAMERA, "AMERICA" (PATENTED)
24 Time or Instantaneous Pictures without change of Plate. Price, complete, \$25.00 and up.

FOR SALE BY
STIRN & LYON, Sole Agents for the United States and Canada

1893



They can turn up anywhere.

Private areas in:

- Businesses
- Sports Club
- Gov't offices
- Hotels
- Airplane
- Winery
- FBI Office
- ...?

Hidden camera case: Former Rancho Palos Verdes employee pleads no contest to secretly recording in bathrooms

Man accused of hiding spy camera in a United Airlines first-class bathroom

KATIE MATHER, AOL.COM



B.C. man accused of putting hidden camera inside winery bathroom



FBI Contractor Hid Camera Under Co-Worker's Desk, Court Documents Say

By Gina Cook

Published Aug 4, 2019 at 11:07 PM



TRENDING STORIES

1 VIDEO 34 Presumed Dead in California Boat Fire, Search Suspended

2 No Passes Required to Visit the NMAAHC on Weekdays (for Now)

Existing CCTV can also be a problem.



Who has access?
Where are the cameras located?

Existing CCTV can also be a problem.

NEWS 19 NEWS WEATHER SPORTS NORTH ALABAMA'S CW ON-AIR COMMUNITY CONTACT US

NEWS

State investigating allegations of inappropriate surveillance at Jackson County courthouse


f t w m e +



Jackson County Courthouse, Scottsboro

Posted: Dec 21, 2020 / 10:27 AM CST / Updated: Dec 21, 2020 / 10:27 AM CST

JACKSON COUNTY, Ala. — The Alabama Law Enforcement Agency is investigating allegations of "inappropriate surveillance" at the Jackson County Courthouse, county commissioners said Monday.



RELATED CONTENT

State investigating allegations of inappropriate surveillance at Jackson County courthouse

Jackson County Commission chairman resigns

Jackson County Commission chairman cites health reasons for resignation, addresses courthouse surveillance investigation

Jackson County Commissioners approve security sweep for cameras

SCOTTSBORO, Ala. — The Jackson County Commissioners Office moved ahead with a professional search of the courthouse, and a number of other county buildings in Scottsboro, after the discovery of a surveillance camera that may have been used to inappropriately watch a female employee. The Alabama Law Enforcement Agency (ALEA) is currently investigating those allegations.

The commission had surveillance cameras installed at the Jackson County courthouse to enhance security after some incidents involving firearms, including one from 2019 when a man was shot by a deputy after trying to bring a loaded handgun inside.

One of the cameras, though, caused concern enough for the State Bureau of Investigation to look into it. It was discovered on Dec. 15 and was ultimately removed.

"It should be concerning to everybody that works in this courthouse. They should not have to worry about cameras in offices where they don't belong," said Jackson County Sheriff Chuck Phillips.

One day after the investigation was made public, Commission Chairman Tim Guffey resigned vaguely citing health reasons. In a statement, he said, "I did not consult the other commissioners on where to place the cameras."

It goes on to say "No cameras were ever intended for purposes other than observance of command areas."

as access?

Where are the cameras located?

Existing CCTV can also be a problem.

NEWS 19 NEWS WEATHER

NEWS

State investigating inappropriate surveillance at Jackson County courthouse

Jackson County Commission chairman resigns

Jackson County Commission chairman cites health reasons for resignation, addresses courthouse surveillance investigation

Jackson County Commissioners approve security sweep for cameras



Jackson County Courthouse, Scottsboro

Posted: Dec 21, 2020 / 10:27 AM CST / Updated

JACKSON COUNTY, Ala. — The Alabama Law Enforcement Agency (ALEA) is currently investigating those allegations.

RELATED CONTENT

State investigating allegations of inappropriate surveillance at Jackson County courthouse

Jackson County Commission chairman resigns

Jackson County Commission chairman cites health reasons for resignation, addresses courthouse surveillance investigation

Jackson County Commissioners approve security sweep for cameras

and was ultimately removed.

“It should be concerning to everybody that works in this courthouse. They should not have to worry about cameras in offices where they don’t belong,” said Jackson County Sheriff Chuck Phillips.

One day after the investigation was made public, Commission Chairman Tim Guffey resigned vaguely citing health reasons. In a statement, he said, “I did not consult the other commissioners on where to place the cameras.”

It goes on to say “No cameras were ever intended for purposes other than observance of command areas.”

SCOTTSBORO, Ala. — The Jackson County Commissioners Office moved ahead with a professional search of the courthouse, and a number of other county buildings in Scottsboro, after the discovery of a surveillance camera that may have been used to inappropriately watch a female employee. The Alabama Law Enforcement Agency (ALEA) is currently investigating those allegations.

The commission had surveillance cameras installed at the Jackson County courthouse to enhance security after some incidents involving firearms, including one from 2019 when a man was shot by a deputy after trying to bring a loaded handgun inside.

One of the cameras, though, caused concern enough for the State Bureau of Investigation to look into it. It was discovered on Dec. 15

ty Commissioners Office
of the courthouse, and a
ttshoro, after the
may have been used to
e, The Alabama Law
investigating those

as installed at the Jackson
after some incidents
019 when a man was shot
d handgun inside.

cern enough for the State
was discovered on Dec. 15

ould not have to worry
if Chuck Phillips.

Guffey resigned vaguely
nmissioners on where to

service of command

Perpetrators are rarely caught.

Could be anyone:

- Teacher
- Student
- Maintenance personnel
- Employee
- Former employee
- Executive
- Doctor
- Religious leader
- Politician
- ...?



What would happen in your facility?

NEWS WEATHER SPORTS VIDEO MORE

Hidden Camera Found In Women's Locker Room Headquarters



The camera, which appeared to have been connected to a live feed of the women's locker room at one time, was found during regular maintenance of the building.

"We were shocked and disappointed to learn about this serious invasion of privacy. Once we were alerted to the issue, we immediately launched an internal investigation. We take the safety and privacy of our employees extremely seriously and are working with law enforcement to ensure whomever is responsible will be held accountable for this action," the company said in a statement.

The company is now searching its North American offices for any other signs of hidden cameras.

Know who to call for prompt response to any incident.

What we will be covering in this presentation:

- Preparation
- Understand the threats
- Have a plan
- Tools and techniques
- Areas of concern
- Examples

How do you prepare?

When an incident occurs, you should be able to respond immediately.

- Have clear policies already in place.
 - Use of cameras, video, and cellphone cameras
 - Areas with privacy expectations
 - Consider existing CCTV camera locations and procedures



Also consider:

Whose responsibility is it to respond?

- Security
- Legal
- HR Department
- Maintenance

Who gets notified?

Should law enforcement be involved?

Have you taken pro-active steps toward mitigation?

Initially, a professional sweep is recommended for corporate concerns.

- Demonstrates due diligence.
- Provides documentation of best efforts.
- Provides peace of mind -Legal -Public Relations -Security
- Establish a base line for future inspections.
- Employees will recognize serious concern.
- Know who to call for future incident response.

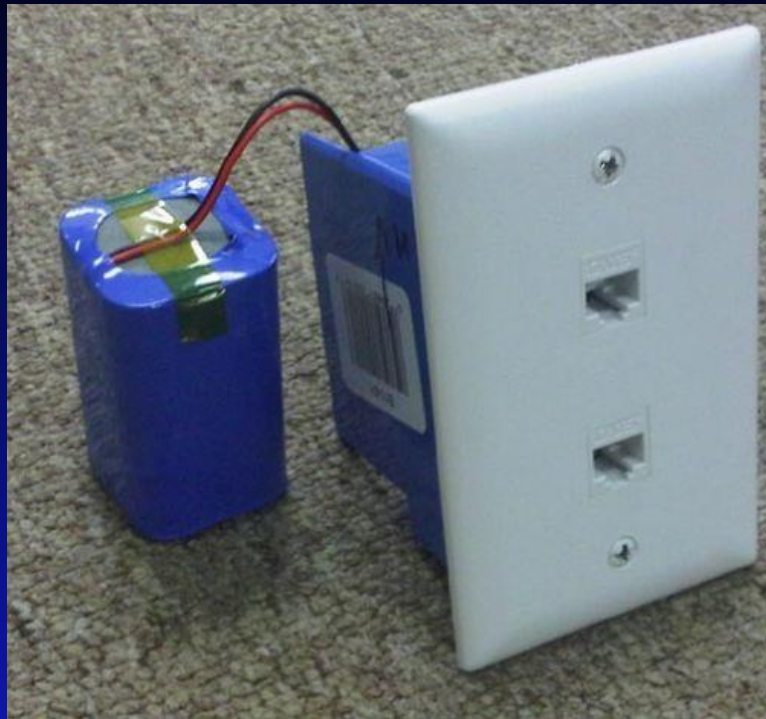


Know the Threats

Learn what devices are available.



Designed to look like ordinary items.





Available with wifi or cellular transmitters
or with self contained video recorders.





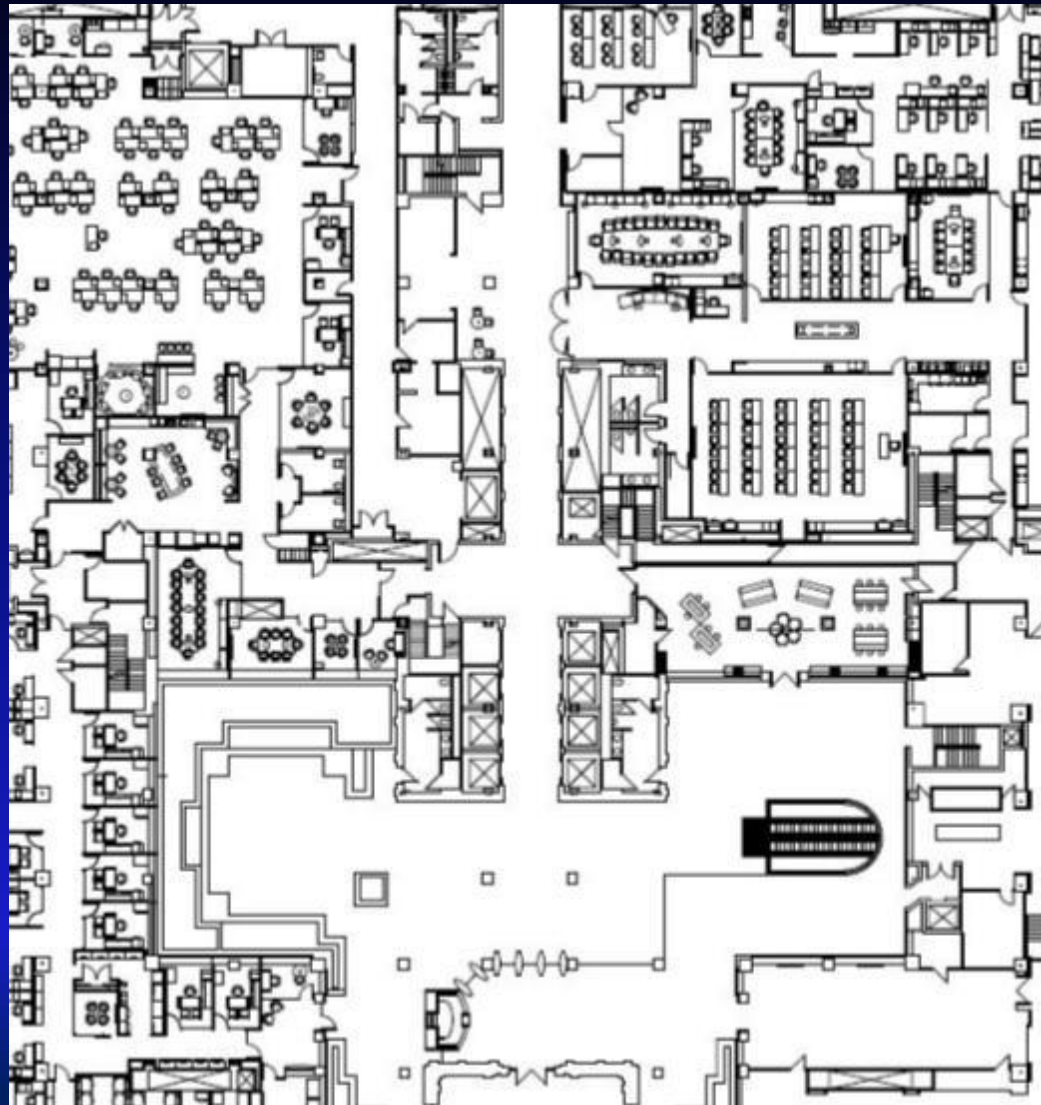
Plan

What areas need inspection?

- Restrooms
- Locker rooms
- Gym, fitness center
- Mother's nursing area
- Other private areas
- Adjoining rooms/areas
- Obtain floor plans if possible.
- Make a check list for every area.
- Schedule enough time to be thorough.

Floor Plans

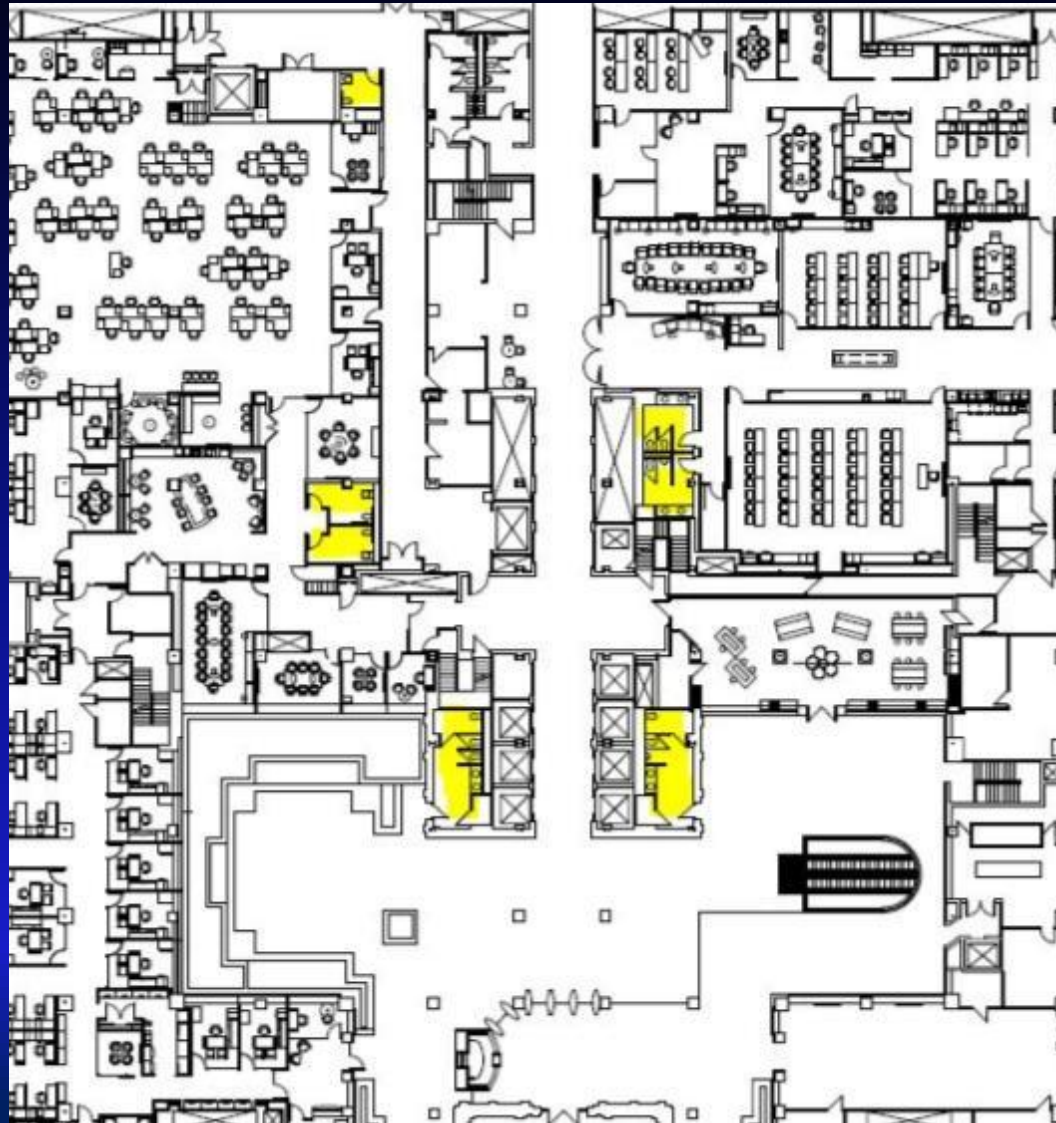
How many
restrooms?



Floor Plans

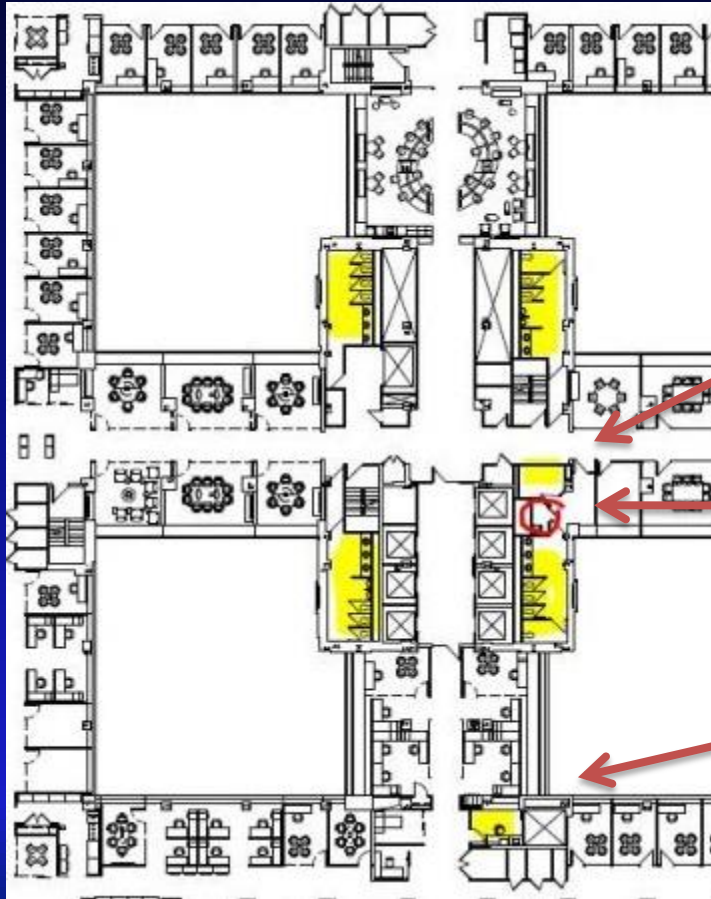
How many
restrooms?

7



Floor Plans - check out the floor carefully.

Some areas are not marked or not obvious.



Handicap
restroom

Janitor's
closet

Mothers'
room

Tools and techniques

- *observation*
- *basic tools*
- *physical access*
- *electronic tools*
- *advanced tools and techniques*

Basic Preparation-

Don't forget:



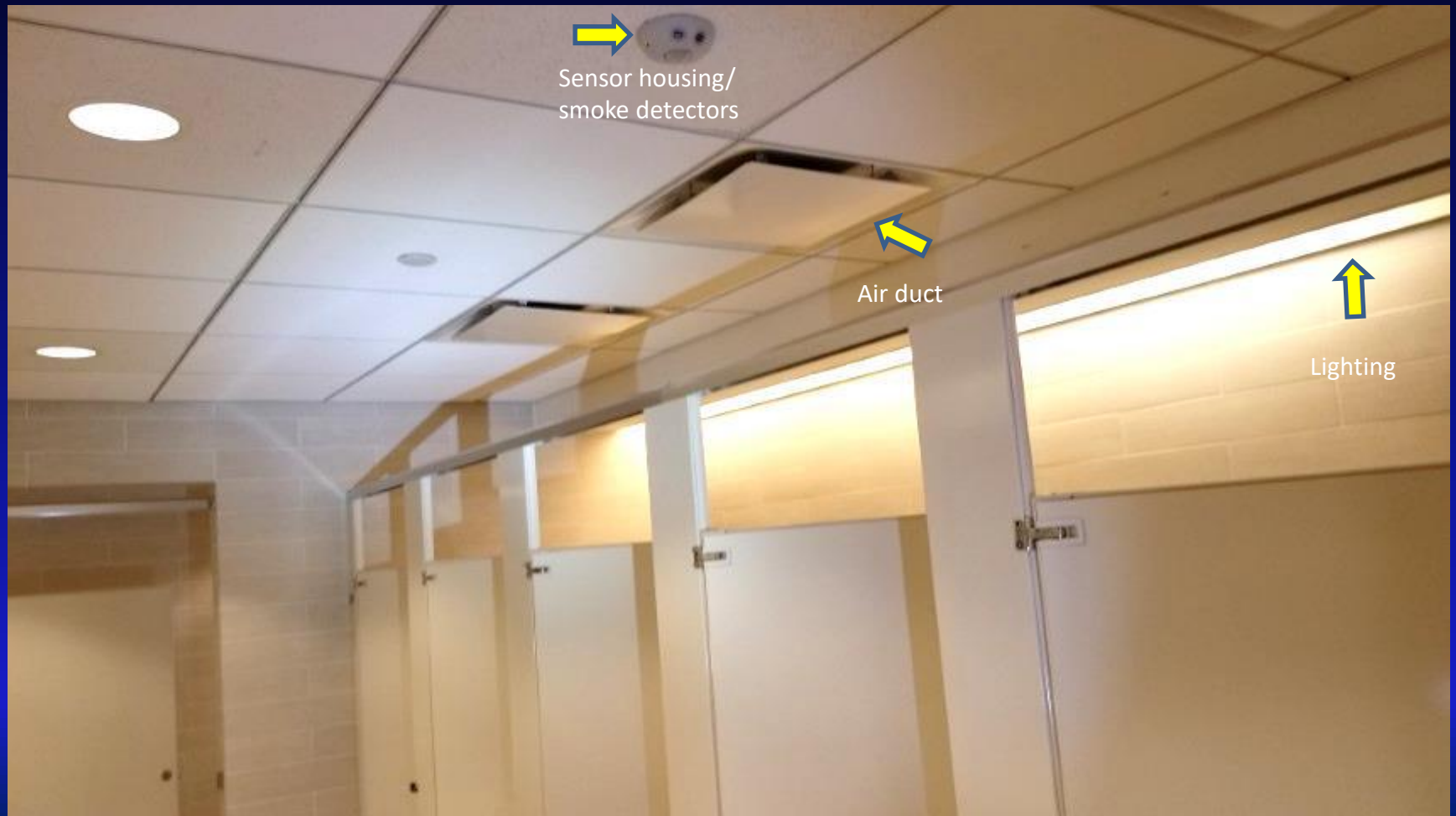
Sanitary- gloves, wipes

Restrict access during inspections-
Prepare signs, barriers

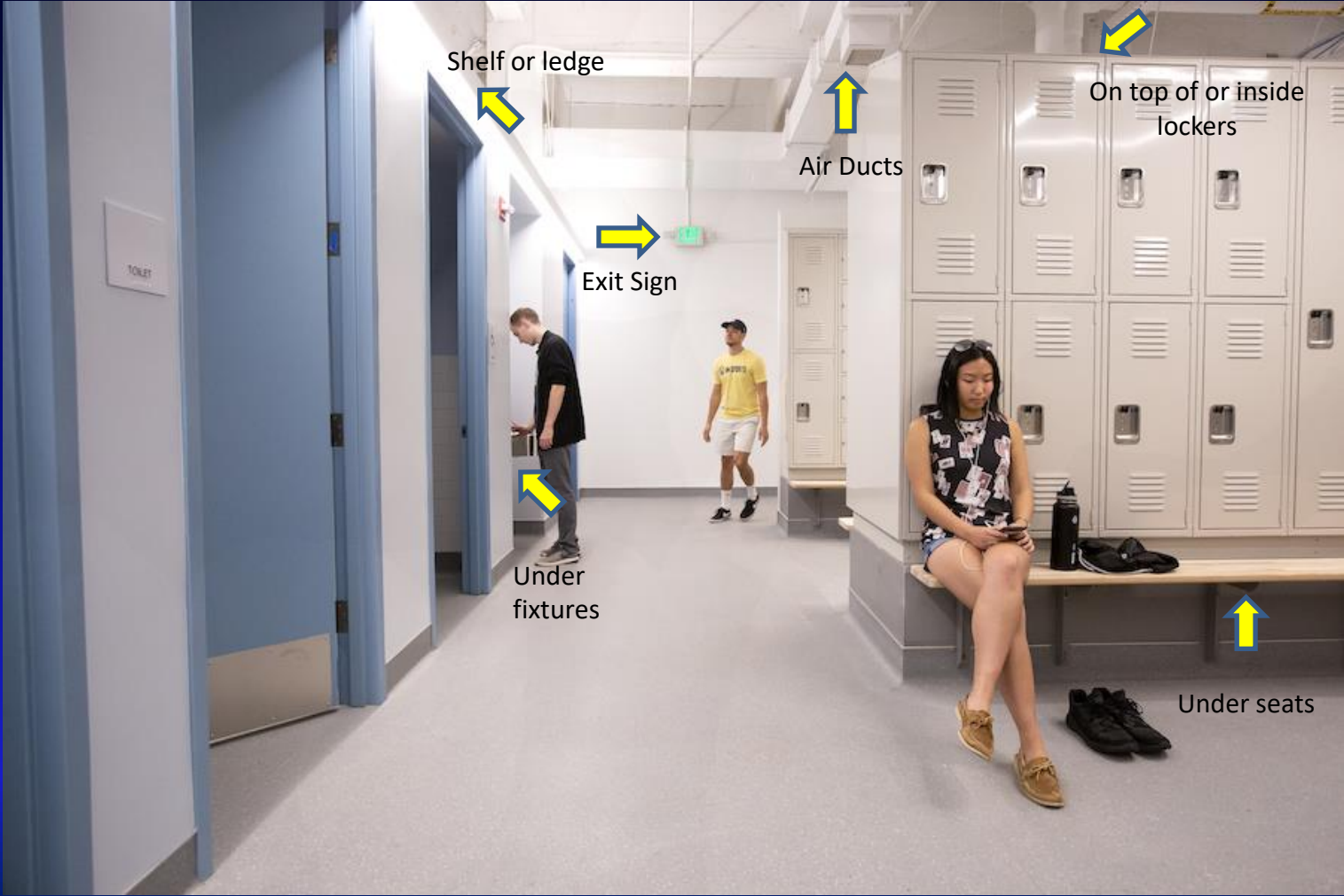


Visual inspection/ Observation

Observe the area, where are potential hiding places?



Observe the area, where are potential hiding places?



Physical Inspection

Tools

Basic tools

- Screwdrivers, wrench, pliers
- Flashlight
- Inspection Camera
- Mirror
- Ladder



Convex truck mirror mounted on extension pole.



Inspection camera





Electronic Tools

- Lens detection (“retro-reflection”)
- Thermal Imaging
- Radio signal detection
 - Video demodulation
 - Wifi, cellular, Bluetooth
 - Advanced spectrum analysis
- Wifi detection

Lens detection/ Retroreflection principle



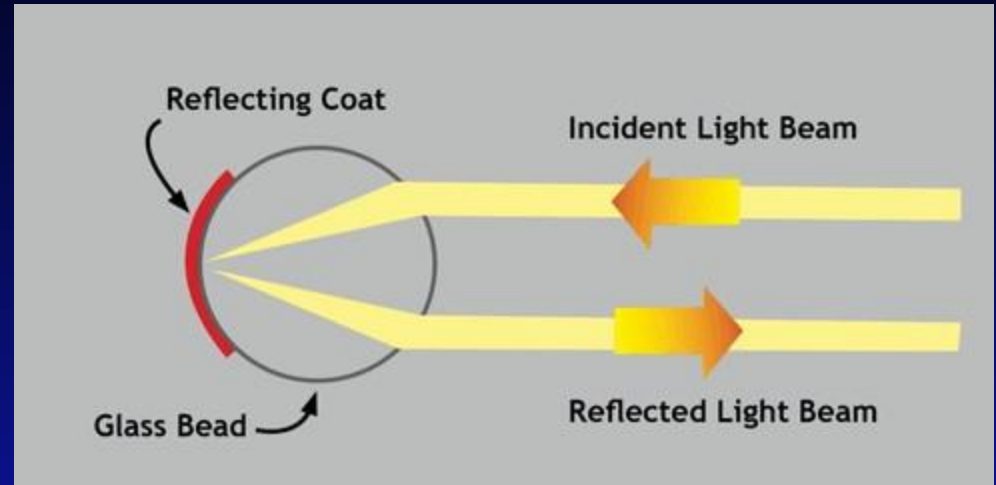
All cameras have lenses.

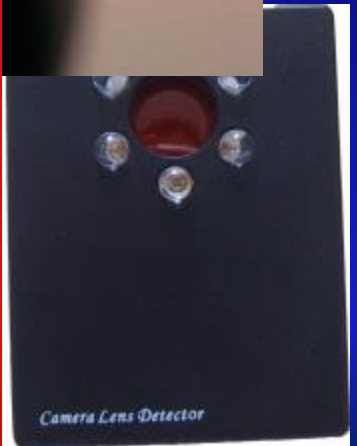
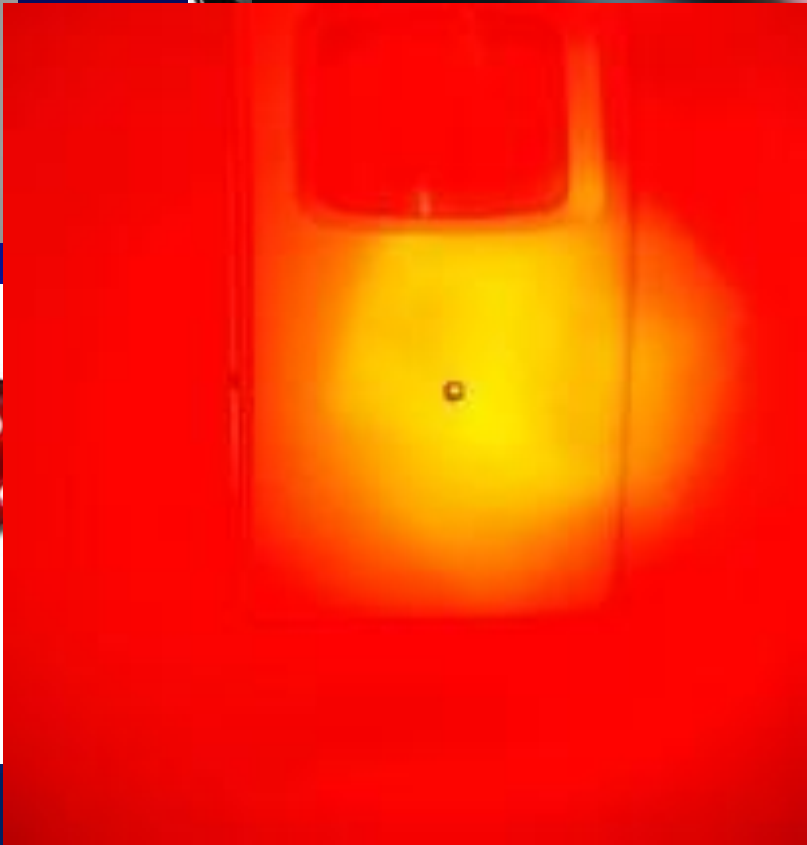


Lenses reflect light.

Retroreflection principle

Light will reflect 180 degrees off of retroreflective surfaces





Flashlight can be used.



IR Viewing and Detection

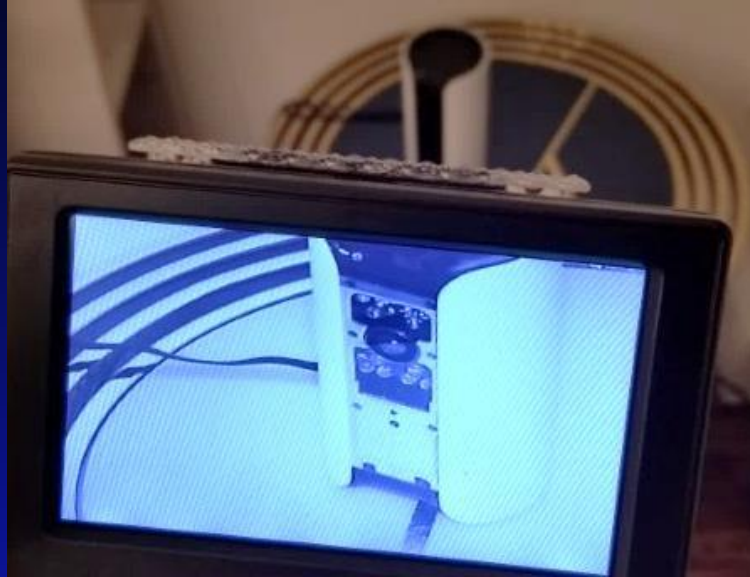
IR Viewing and Detection



If a hidden camera is using IR illumination, you may be able to detect it using your cell phone camera.



IR Viewing and Detection



Specialized IR viewing camera can see through light blocking covers, such as in clock radio cameras.



Thermal Imaging



\$500 - \$3000+



Slowly scan the area looking for any indication of abnormal heat.

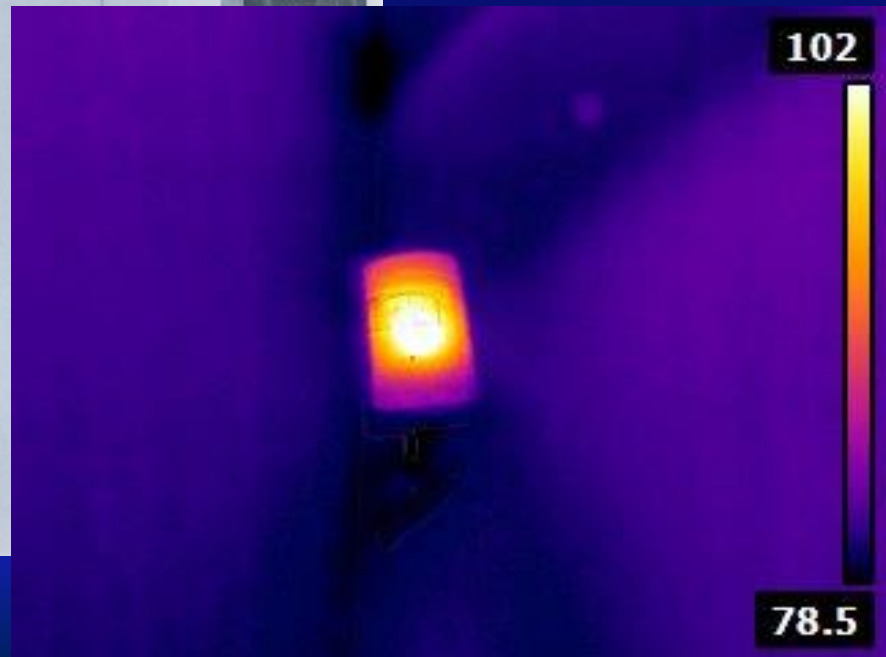
Covert camera mounted high on a wall.
Looks like a conventional PIR motion sensor.



PIR camera high on a wall.

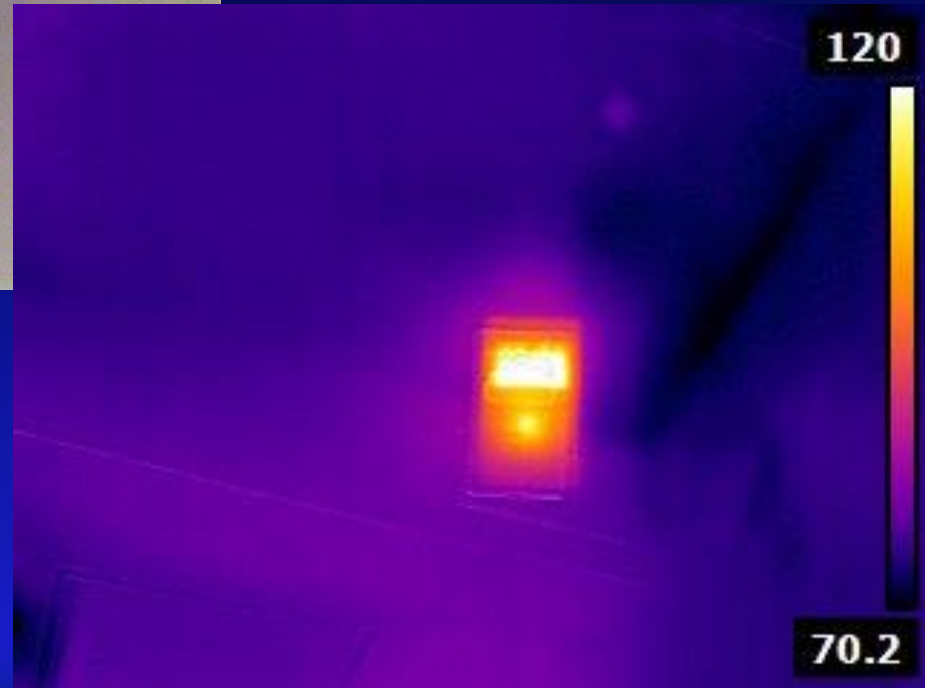


Thermal imaging reveals heat from the hidden camera.





Normal PIR sensor does not show heat.



Covert PIR camera using infra-red illumination showed up in both the regular camera as well the thermal image.

Radio Signal Detection

Basic RF detection (inexpensive – limited results)



\$30 to \$600

Video Signal Detection

(analog only – limited results)



\$300 to \$700

Advanced RF Detection

Broadband receivers.



\$3000 to \$7000

Specialized RF Detection (cellular-Bluetooth-WiFi)



\$900 to \$4000

Professional RF Detection Spectrum Analysis



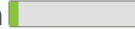
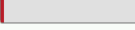

\$12,000 to \$35,000

Wifi Detection

(limited detection)

Cell phone apps
Software
Hardware

Many covert cameras use WiFi.
They may connect with an existing
network or may create their own.
Look for abnormal id.
Know what should be present.

| | |
|-------------|---|
| Noise Level | -93 dBm  |
| SNR | 3 dB  |
| SSID | QMCamera |
| BSSID | Mimosa:06:d0:60 |
| Security | WPA2  |

Wifi Detection

Apps

Wifi Apps are typically designed for WiFi management

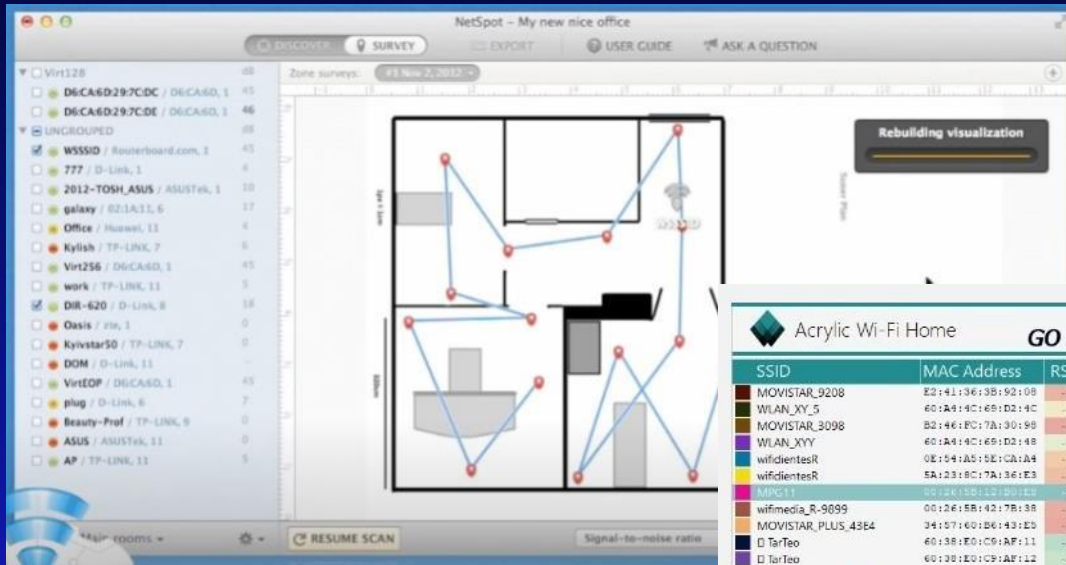
The image displays three overlapping app store listings for WiFi management applications:

- Fing - Network Tools** (Fing Limited, Tools, 344,483 reviews, Everyone): The listing features a blue icon with a circular arrow and a central dot. It includes a preview image showing a list of connected devices on a smartphone screen.
- WiFiman** (Ubiquiti Inc., Tools, 52,509 reviews, Everyone): The listing features a blue icon with a white figure resembling a superhero. It includes two preview images: one titled 'Monitor internet health' showing a dashboard with various metrics, and another titled 'Test internet speed' showing a large '203.4' result.
- Wifi Analyzer** (farproc, Tools, 350,737 reviews, Everyone): The listing features a grey icon of a Wi-Fi signal with a probe. It includes a preview image showing a detailed signal strength graph with multiple colored peaks and a play button overlay.

Wifi Detection

Software – free version available

Netspot
netspotapp.com



Acrylic Wifi
acrylicwifi.com



Wifi Detection

Hardware

NetAlly Aircheck G2
netally.com



| Mimosa:06:d0:60 | |
|------------------------|------------------------------|
| Signal Strength | |
| Signal Level | -90 dBm |
| Noise Level | -93 dBm |
| SNR | 3 dB |
| SSID | QMCamera |
| BSSID | Mimosa:06:d0:60 |
| Security | WPA2 |
| 802.11 Types | g b n ac |
| Supported Rates (Mbps) | 6, 9, 12, 18, 24, 36, 48, 54 |
| Basic Rates (Mbps) | 6, 12 |

Berkeley Varitronics
YorkiePro
bvsystems.com



| MAC / SSID | RSSI (dBm) | CHANNEL |
|-------------------|------------|---------|
| 18:65:90:0E:1B:23 | -43 | |
| WIFI ACCESS POINT | 120 | |
| C0:CE:CD:E6:00:26 | -69 | |
| IPHONE HOTSPOT | 10 | |
| 18:00:DB:0D:A1:17 | -78 | |
| LINKSYS AP | 11 | |
| 00:16:AD:8E:71:15 | -79 | 6 |
| 18:65:90:0E:1B:23 | -84 | |
| OPTIMUM ACCESS | 3 | |
| C0:CE:CD:E6:00:26 | -86 | |
| LINKSYS ROUTER | 153 | |
| 18:00:DB:0D:A1:17 | -92 | |
| NETWORK AP | 112 | |
| 00:16:AD:8E:71:15 | -103 | 44 |

WHITE LIST RESET WHITE LIST PAGE

\$1000 - \$3000

Be Thorough

Consider all areas that may need attention.

Areas of Concern

Restrooms

- Multi-stall
- Single
- Handicap/Family
- Executive office
- Private area



Areas of Concern

Locker/ Shower Rooms

- Work staff
- Fitness center



Areas of Concern

Other areas

- Mothers' nursing room
- Loading dock restroom
- Kitchen
- Maintenance areas



Maintenance rooms or janitor closets may be connected to private areas.



Areas of Concern

Related

- Pipe chase
- Hatchways
- Adjoining rooms
- Ceiling access
- Closets



Potential hiding places



Potential hiding places



Check for hidden compartments that might have sight lines.

Potential hiding places



Items of Interest.

Items of Interest

Ceiling tile was ajar - suspicious at first.



Items of Interest

A power supply normally used for AV equipment was found inside.



RDL
Radio Design Labs

Precision Audio and AV Interface Products

Items of Interest

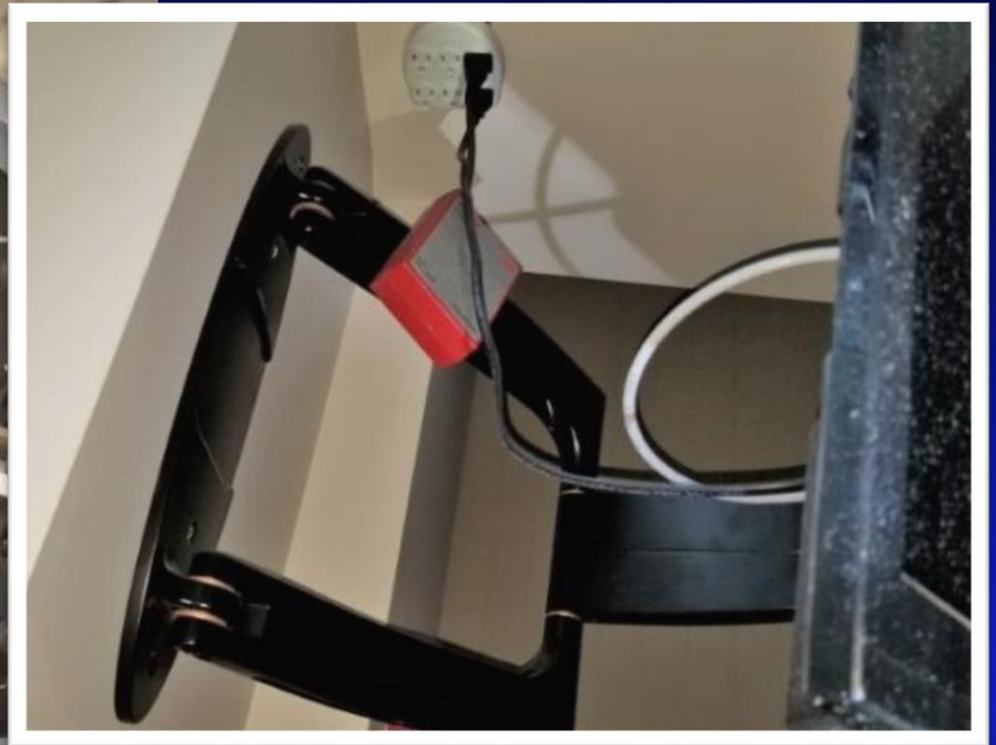
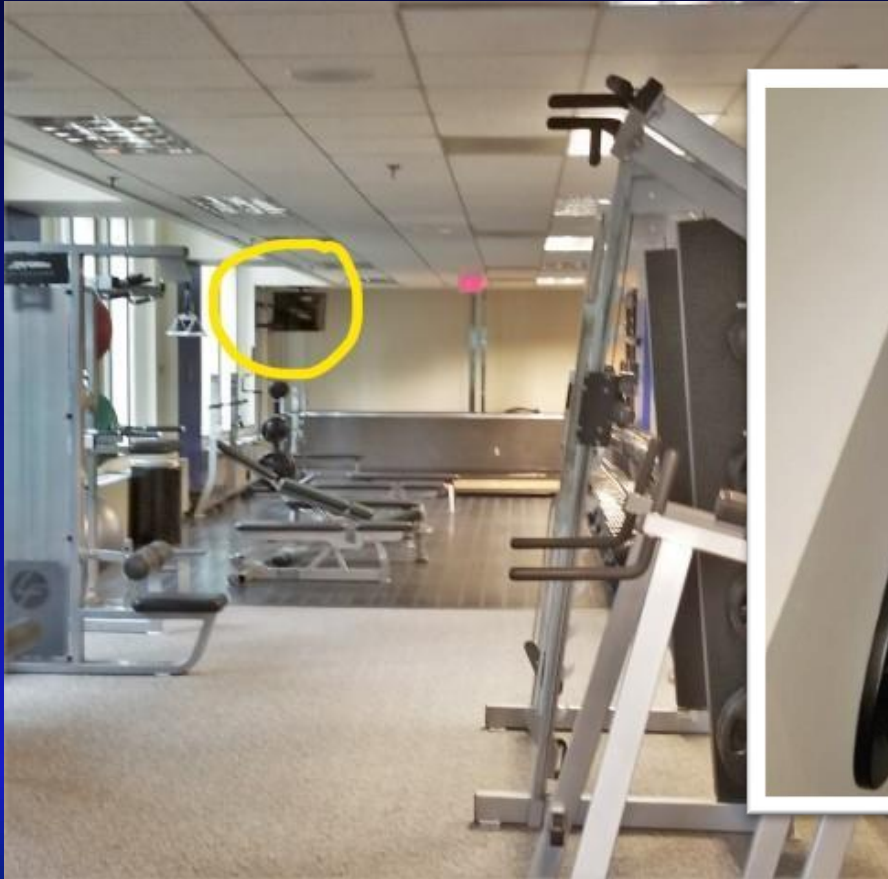
False alarm.

It was only used to power an emergency strobe in the hallway.



Items of Interest

Electronic device hanging behind TV in fitness center.



Items of Interest

Suspicious transmitter?



Just a forgotten electrician's test instrument.



Electrician's tester.



Items of Interest

Former camera hole



Items of Interest

Former camera hole



Camera was gone, but a power supply still remained in the ceiling.

Concern-

Inspection of a hole led to items found in drop ceiling.





Pornography found above the ceiling tiles.

Minor Concern- Open ceiling between men's and women's locker rooms



Allows viewing from men's locker room into women's locker room through air ducts.

There may not be much you can do about it, but be aware in case any other suspicious activity occurs.



Concern- Tampering of Air Ducts



Damaged air duct



Pipe chase was accessible from a separate hallway entrance.

Damaged air duct



Inspection found that the metal ducts had been tampered with.

Concern –

A hole in the duct allowed view through the vent behind the ladies' toilet.



Concern –

A hole in the duct allowed view through the vent behind the ladies' toilet.



Concern –

A hole in the duct allowed view through the vent behind the ladies' toilet.



Concern –

A hole in the duct allowed view through the vent behind the ladies' toilet.



Concern –

A hole in the duct allowed view through the vent behind the ladies' toilet.



A small camera can fit easily through the vent.

Camera in ceiling tile.



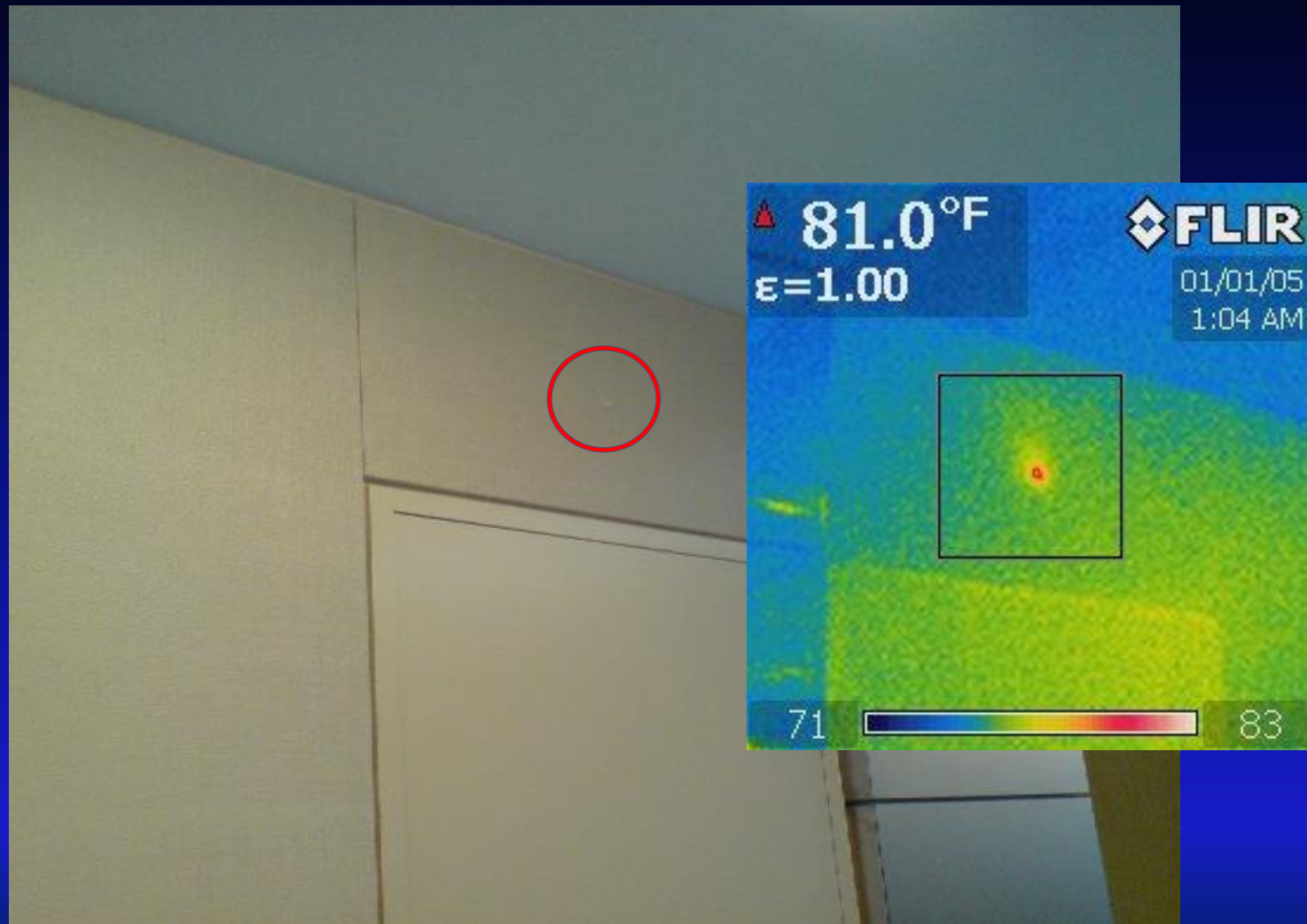
A hole in the ceiling tile was hard to notice from a distance.

Camera in ceiling tile.



Searching above the ceiling revealed the camera. It had a low profile and was not obvious at first. There were many other cables in the ceiling but the camera had a yellow video connector that was noticeable.

Camera discovered through thermal imaging.



Camera found installed into a working desk phone.



The radio signal was detected first. Further inspection found the phone with a power supply attached, yet no other phones used power supplies.



Camera found installed into a working desk phone.

The camera had been installed inside the modified phone case.



Tool summary

Basic tools

- Screwdrivers, wrench, pliers
- Flashlights
- Inspection Camera
- Mirror
- Ladder

Advanced tools

- Lens detector
- RF detector
- Wifi detection
- Thermal imaging

Professional tools

- RF detection
- Spectrum analysis
- Wifi analysis
- RF video detection, demodulation
- Thermal imaging
- Non-Linear Junction Detector
- Inspection cameras
- Camera lens detection



Connect with a professional sweep team:

- Provides peace of mind
- Documentation/ due diligence.
- Establishes a base line for future inspections.
- Full suite of technical tests
- Thorough physical inspection-
- Experience with advanced technical devices
- Focused effort and serious attitude
- Can provide training for your own staff
- Available for consultation when an incident occurs.



Charles Patterson
execsecurity.com
charles@execsecurity.com
914-819-5400

EXEC  **SECURITY**
TSCM TECHNICAL SERVICES